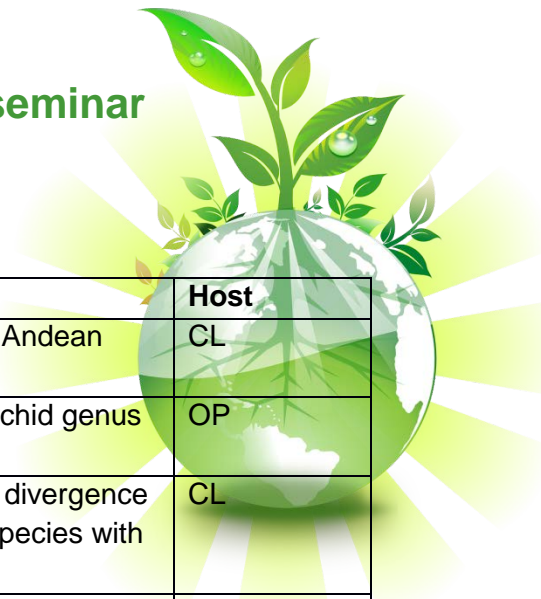


Systematic & Evolutionary Botany division seminar 'Biosystematics and evolution of plants'

Schedule, winter semester 2016 / 2017, Mondays, 11.15h, ÜR 2



Date	Speaker	Title	Host
3. Oct	María José Sanín, Universidad CES, Colombia	Advances and prospects in Andean palm phylogeography	CL
10. Oct	Mikael Hedren, Lund University, Sweden	Polyploid evolution in the orchid genus <i>Nigritella</i>	OP
17. Oct	Ovidiu Paun, University of Vienna	Molecular basis of adaptive divergence between two <i>Dactylorhiza</i> species with distinct ecological optima	CL
24. Oct	Jacky Lucien Andriantiana, Parc Botanique et Zoologique de Tsimbazaza	Madagascar and its terrestrial orchids	MK
31. Oct	(no seminar)	---	
7. Nov	Jalil Noroozi, University of Vienna	Areas of endemism in Iranian plateau based on plant species	GS
14. Nov	Gil Yardeni, Tel Aviv University / University of Vienna	Local adaptation and intraspecific reproductive isolation in Irises	CL
21. Nov	Xi Li, University of Vienna	Phylogeny and evolution of Orobanchaceae	GS
28. Nov	Nicolas Salamin, University of Lausanne, Switzerland	Evolutionary modeling of species and trait diversification	CL
5. Dec	Marcela van Loo, BOKU / University of Vienna	Non-native tree species: genomic invasion and admixture in Europe	CL
12. Dec	Clemens Pachschröll, University of Vienna	Attempts to detect 'invaders in disguise' – DNA barcoding of invasive plant species in Austria	GS
9. Jan	Teresa Luftensteiner, University of Vienna	Incidence of polyploidy and hybridization and their impact on evolution of aquatic members of genus <i>Ranunculus</i> (formerly <i>Batrachium</i>)	HS
16. Jan	Michael Glaser, University of Vienna	The impact of the invasive tree <i>Robinia pseudacacia</i> on dry grasslands in the UNESCO world heritage Wachau, Lower Austria	JG
23. Jan	Jaqueline Hess, University of Oslo / University of Vienna	Examining genomic changes sustaining ecological transitions in fungi – or learning how to talk to plants	CL
30. Jan	Pan Da, University of Vienna	Quaternary niche dynamics and range dynamics in alpine plants	GS